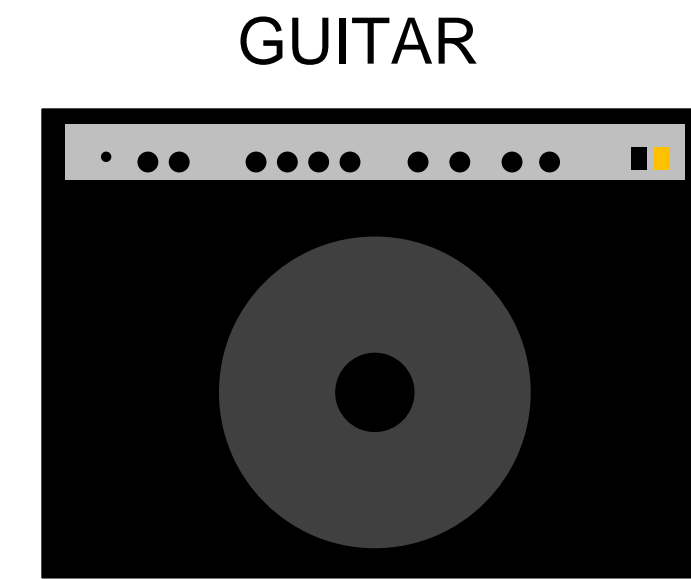
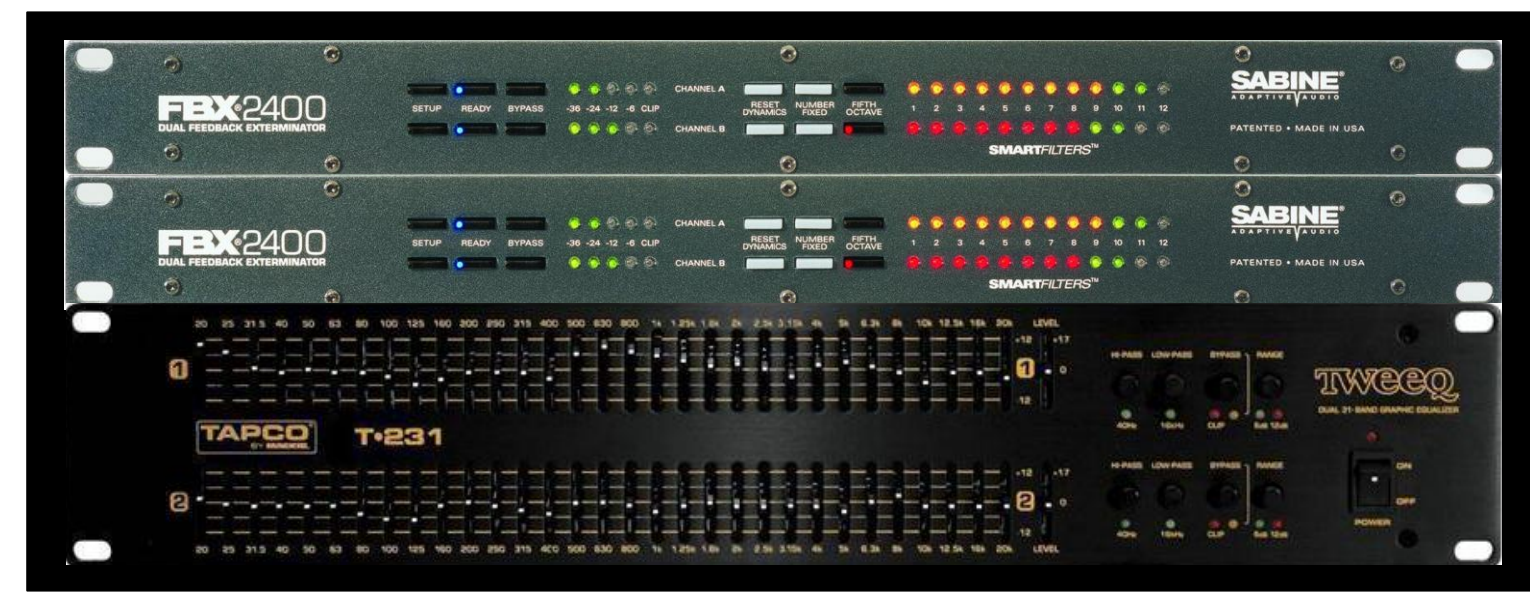




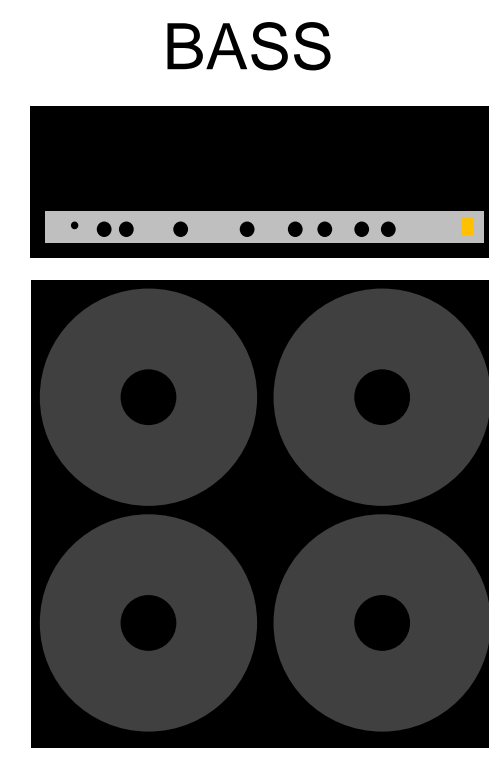
JIŠTĚNÝ PŘÍVOD
230V/16A

FBX Rack :

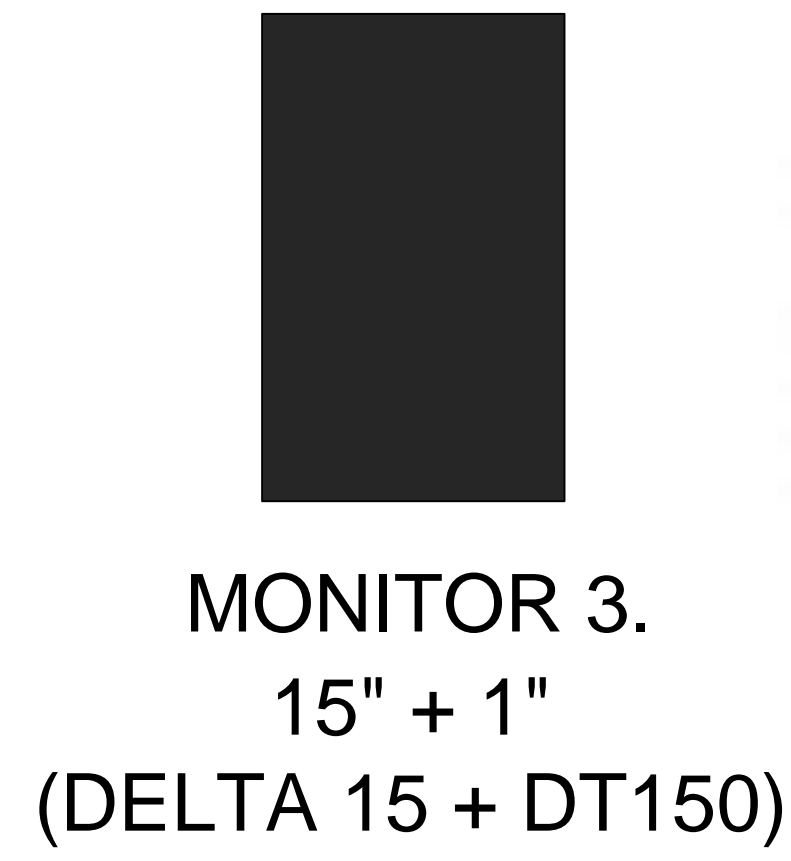
SABINE FBX2000 dual feedback exterminator
SABINE FBX2000 dual feedback exterminator
TAPCO TWEEQ dual channel 31-band EQ



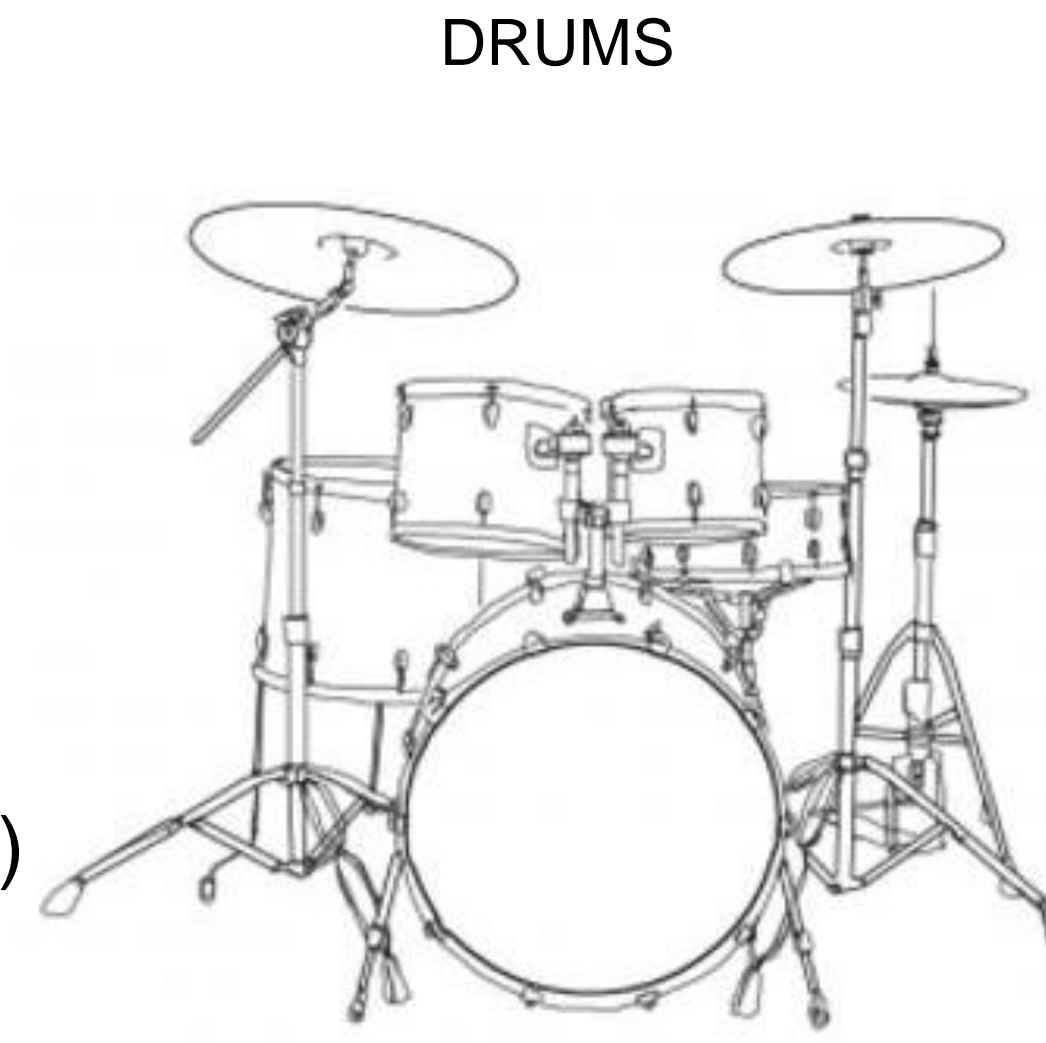
GUITAR



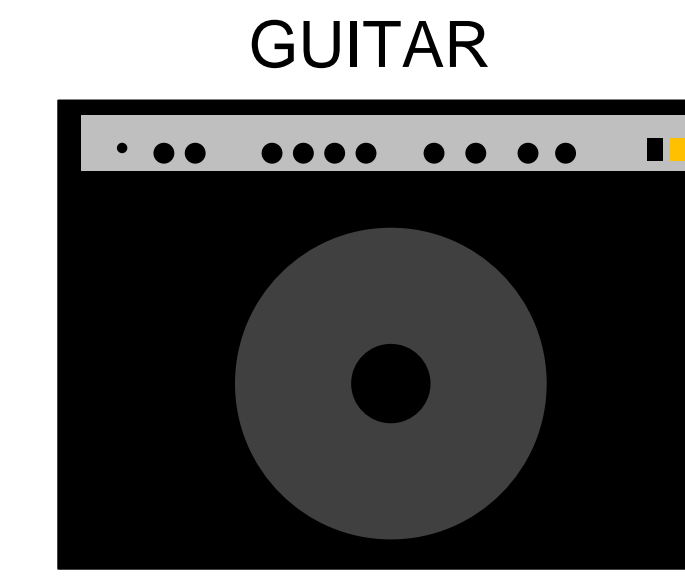
BASS



MONITOR 3.
15" + 1"
(DELTA 15 + DT150)



DRUMS



GUITAR

T-snakke 30m 14 in + 6 out
konektory NEUTRIK



MONITOR rack

QSC RMX2450
BEHRINGER EP2500



VOCALS MIC



DRUMS MIC

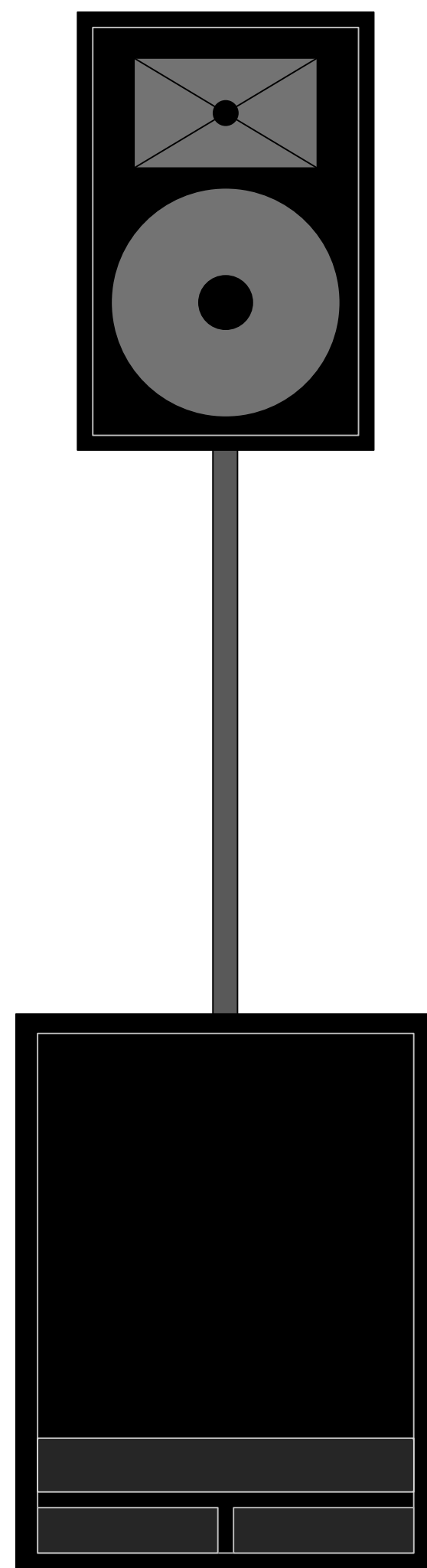


GUITARS „MIC“



PA - rack:

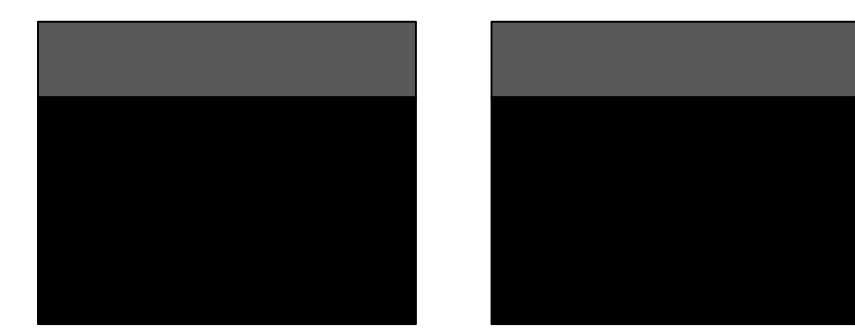
RANE AC22S
QSC RMX2450
QSC RMX2450



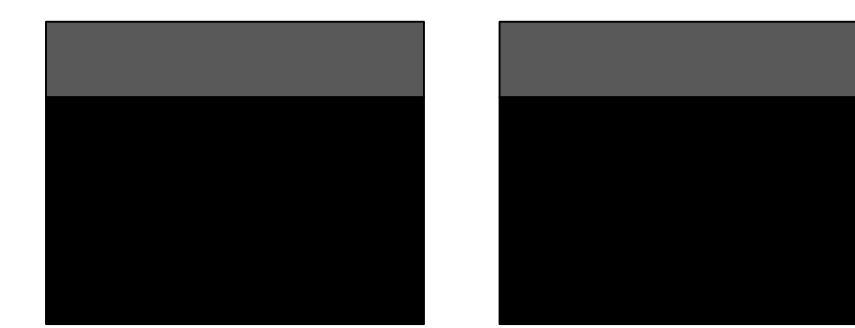
PA - L:

kompakt 1x10" + 1"
(10HPL64 + DE12 + ME45)

1x bandpass 15"
(KAPPALITE 3015LF)



MONITOR 1.
12" + 1"
(PD12-150 + DT150)



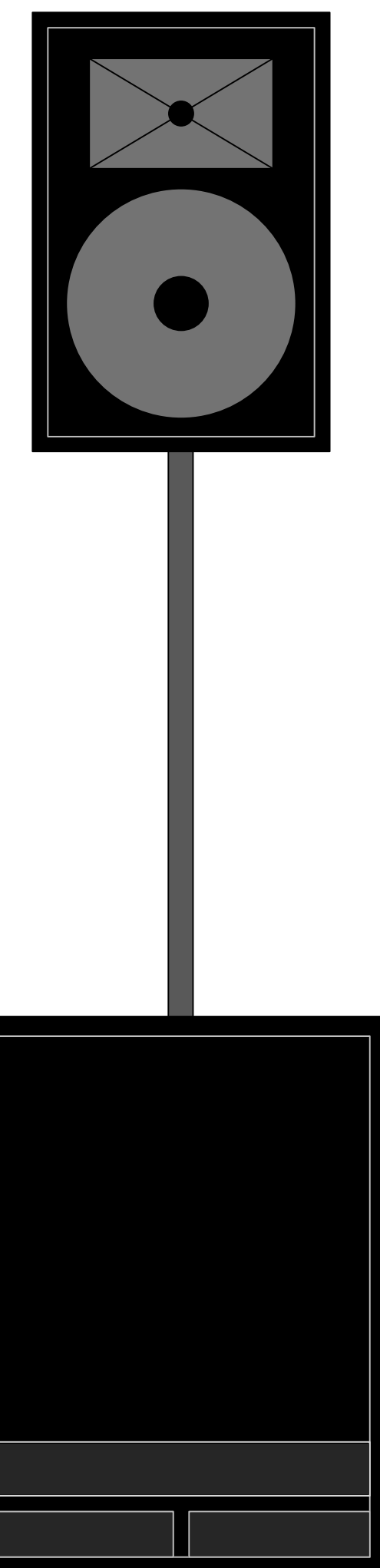
MONITOR 2.
12" + 1"
(PD12-150 + DT150)

Allen-Heath ZED18



Effect rack:

TC ELECTRONIC C300
RANE DC-22B dynamic procesor
Samson S-gate 4 - 4 channel gate
RANE C-4 - 4 channel compresor
LEXICON MX400 - multieffect procesor
DIGITECH S100 - multieffect procesor
BBE sonic maximizer 2x kompakt 2x12" +



PA - R:

kompakt 1x10" + 1"
(10HPL64 + DE12 + ME45)

1x bandpass 15"
(KAPPALITE 3015LF)